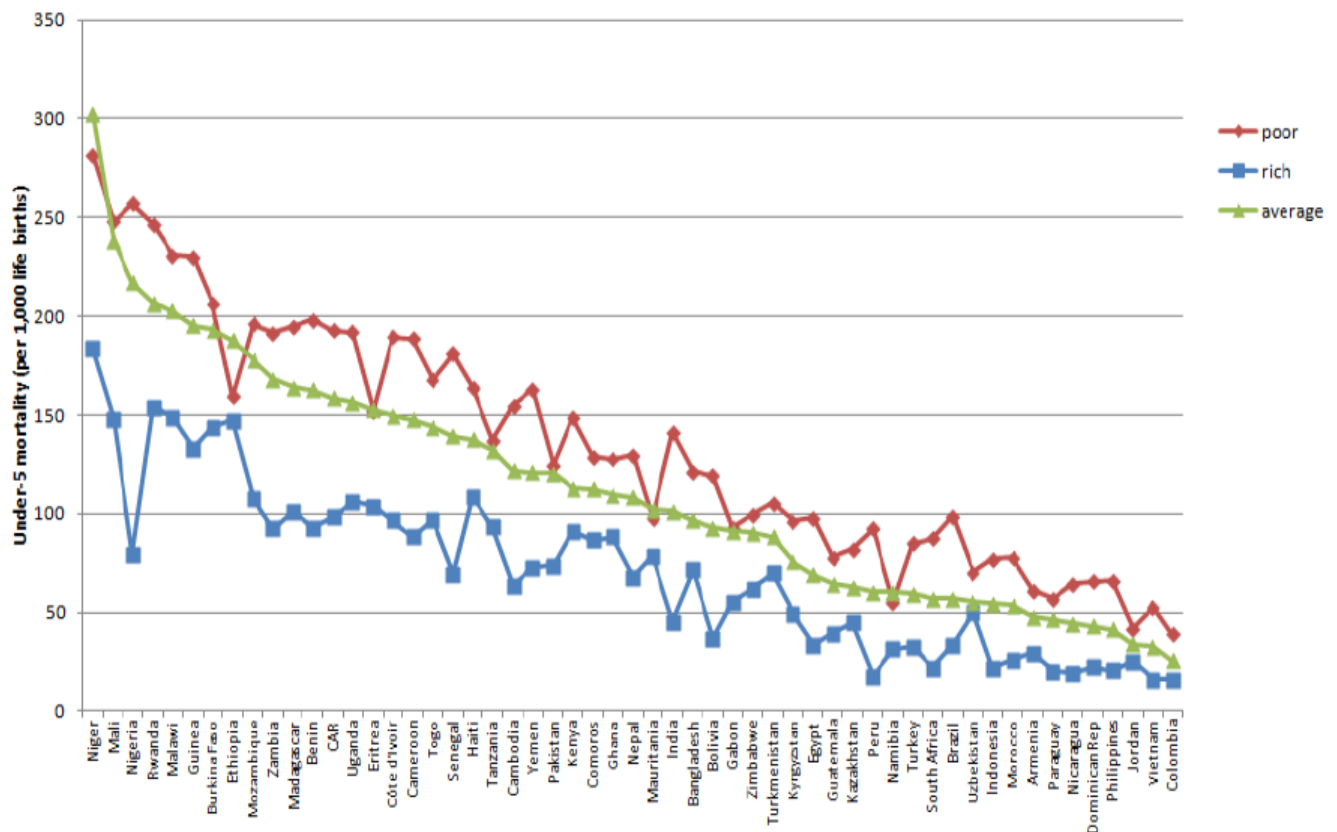


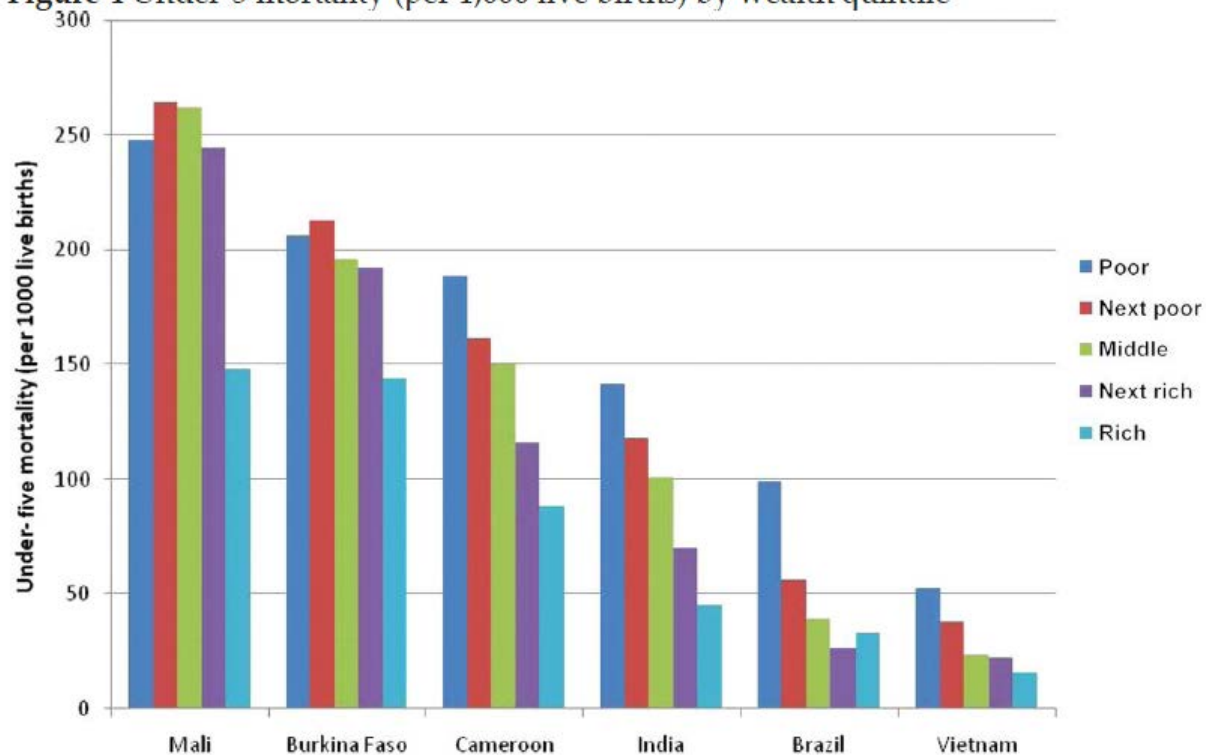
Health Economics and Financing: Module 1

Questions for Reflection #2



Source: Houweling and Kunst (2010)

Figure 4 Under-5 mortality (per 1,000 live births) by wealth quintile



Source: Houweling and Kunst (2010)

Question: What do Figures 3 and 4 tell you about the differences in mortality between rich and poor?

Question 2: How is it that some LMICs are able to make faster progress in reaching the MDG targets than others? Put differently, why is it that some low-income countries are able to make a bigger impact on health despite having similar levels of income?